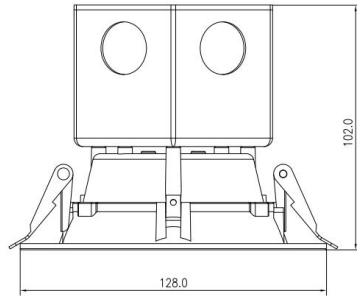


D404-N-KT-XXXX



Size :
Φ 128x102mm(5.04x4.02")

Features

- Energy efficient: save up to 80% in energy costs
- High lumen output
- Mercury-free
- Instant-on light
- 50,000 hours at 70% lumen maintenance rated life
- Easy installation
- 5 years manufacturer warranty

Technical Characteristics:

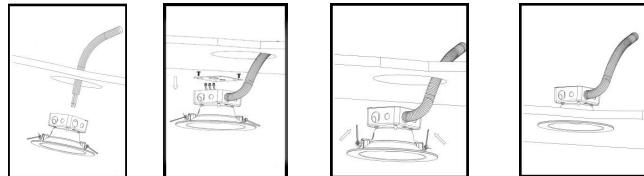
Color Temperature	3000K/4000K/5000K
Dimmable	>Yes at 120V
Lumen	>700-800 lms
Input Power	10 W
Input Voltage	100-277V AC
CRI	>90

Application:

Home, Office, Shopping Malls



Installation Instructions



1. Shut off power before installation. Cut a corresponding hole in the ceiling. A template is provided to assist with laying out the hole location. When running the supply wires(s), allow an additional 18" of wire at each installation in order to make the electrical connections on the room side of the ceiling hole
2. Remove the Junction Box Screw(s) holding the Junction Box Cover. Pass the supply wire(s) through the appropriate knockout hole on Junction Box. Make the electrical connections to fit inside Junction Box following the ELECTRICAL CONNECTIONS. Make sure all connections are secure, tuck all wires inside Junction Box and reinstall Junction Box Cover using Junction Box Screws.
3. Press the top portion of the Remodel Clips against the side of the Housing Assembly.
4. Push the Housing Assembly with the top side of the Remodel Clips through the hole until tight. Continue to push the Housing Assembly until the fixture snaps into place with the trim tight against the ceiling surface.

Others

Warranty time: 5 years

To prevent injury or damage to property, this product must be installed in accordance to National Electrical Code (NFPA70) in the US or Canadian Electrical Code (CSA 22.1) in Canada.

Risk of fire or electric shock. The electrical rating of these products are 100-277 Vac, the installer must determine whether they have 100-277 V at the luminaire before installation.

Risk of fire or electric shock. Installation requires knowledge of luminaires electrical systems. If not qualified, do not attempt installation. Contact a qualified electrician.

To prevent wiring damage or abrasion, do not expose wiring to edges of sheet metal or other sharp objects.

Disconnect power before installing the product or servicing it.

Wait until fixture has cooled down before installing or servicing the fixture. Min. 90°C Supply Conductors

Warranty Period assumes that the Products are operated for less than 8 hours per day.

Packaging

Size	Carton Size	Pcs/CTN	N.W.	G.W.
4"	34.5x28x28.5cm/13.4x11.0x11.2"	12	6.0kgs/13.2 lb	7.0kgs/15.4 lb