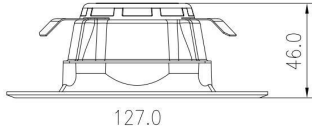
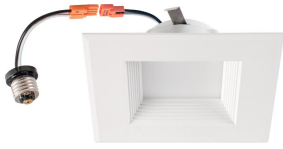


D724-XXXX



Size : $\Phi 127 \times 46 \text{mm}$ (5 x 1.81")

Features

- Energy efficient: save up to 80% in energy costs
- High lumen output
- Mercury-free
- Instant-on light
- 50,000 hours at 70% lumen maintenance rated life
- CCT:2700-5000K
- 5 years manufacturer warranty

Technical Characteristics:

Color Temperature	3000K/4000K/5000K
CRI	>90Å
Lumen	600 lms
Input Power	9 WÅ
Input Voltage	120V AC
Life time	50,000 hours

Application:

Home, Office, Shopping Malls



Installation Instructions



Step1: Twist adaptor into socket.



Step2: Insert male connector into female one. Step3: Insert LED trim.



Packaging

Size	Carton Size	Pcs/CTN	N.W.	G.W.
4"	40x28x14cm/15.75x11.02x5.51"	12	4kgs/8.82 lb	5kgs/11.02 lb

Others

Warranty time: 5 years

To prevent injury or damage to property, this product must be installed in accordance to National Electrical Code (NFPA70) in the US or Canadian Electrical Code (CSA 22.1) in Canada.

Risk of fire or electric shock. The electrical rating of these products are 100-277 Vac, the installer must determine whether they have 100-277 V at the luminaire before installation.

Risk of fire or electric shock. Installation requires knowledge of luminaires electrical systems. If not qualified, do not attempt installation. Contact a qualified electrician.

To prevent wiring damage or abrasion, do not expose wiring to edges of sheet metal or other sharp objects.

Disconnect power before installing the product or servicing it.

Wait until fixture has cooled down before installing or servicing the fixture.

Min. 90°C Supply Conductors

Warranty Period assumes that the Products are operated for less than 8 hours per day.