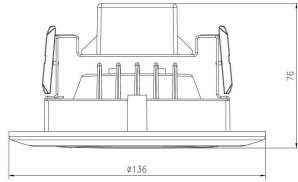


D504-XXXX



Уқ g'z' 358z98o o *7(57z4Q ; \$+

Features

- Energy efficient: save up to 80% in energy costs
- High lumen output
- Mercury-free
- Instant-on light
- 50,000 hours at 70% lumen maintenance rated life
- CCT:2700-5000K
- 5 years manufacturer warranty

Technical Characteristics:

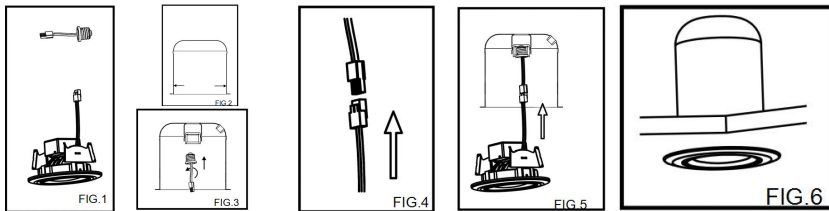
Color Temperature	3000K/4000K/5000K
CRI	>90Å
Lumen	ĩ 00 lms
Input Power	1€WÁ
Input Voltage	120V AC
Life time	50,000 hours

Application:

Home, Office, Shopping Malls



Installation Instructions



If the installed housing does not have TORSION SPRING SLOTS or C-CLIPS (FIG. 5), then remove the SCREWS securing the TORSION SPRINGS to the HEATSINK. Attach the FRICTION BLADES (included) to the same location using the SCREWS that were previously removed. (FIG. 6) INCANDESCENT HOUSINGS

Unscrew the WING NUT inside the CAN to detach the SOCKET BRACKET from the CAN. Disengage the SOCKET from the SOCKET BRACKET. (FIG. 2) Thread the SOCKET ADAPTER into the SOCKET. (FIG. 3)

Plug the FEMALE CONNECTOR of the RETROFIT TRIM onto the MALE CONNECTOR of the SOCKET ADAPTER ASSEMBLY. (FIG. 4)

If using TORSION SPRINGS, squeeze both TORSION SPRING arms together and insert into the TORSION SPRING SLOTS (or RECEIVER BRACKETS) of the CAN. (FIG. 5)

Tuck all wires into the CAN and carefully push the RETROFIT TRIM into CAN. (NOTE: To provide enough room in shallow cans, carefully position SOCKET ADAPTER and SOCKET adjacent to the long side of the LED DRIVER prior to inserting the RETROFIT TRIM into the CAN.) (FIG. 5)

Others

Warranty time: 5 years

To prevent injury or damage to property, this product must be installed in accordance to National Electrical Code (NFPA70) in the US or Canadian Electrical Code (CSA 22.1) in Canada.

Risk of fire or electric shock. The electrical rating of these products are 100-277 Vac, the installer MUST determine whether they have 100-277 V at the luminaire before installation.

Risk of fire or electric shock. Installation requires knowledge of luminaires electrical systems. If not qualified, do not attempt installation. Contact a qualified electrician.

To prevent wiring damage or abrasion, do not expose wiring to edges of sheet metal or other sharp objects.

Disconnect power before installing the product or servicing it.

Wait until fixture has cooled down before installing or servicing the fixture.

Min. 90°C Supply Conductors

Warranty Period assumes that the Products are operated for less than 8 hours per day.