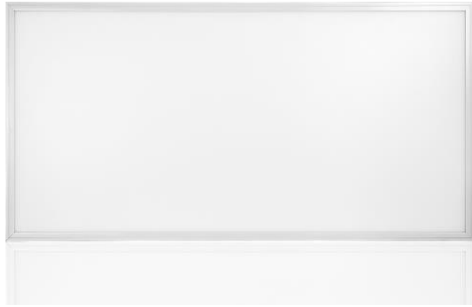


KLB50PLDXX24-P



Advantages:

- Ø UL, DLC Premium certification with isolated external power supply
- Ø Perfect light Uniformity
- Ø PF>0.95, Power Efficiency: >0.87
- Ø LGP 4mm thick
- Ø 5 years warranty
- Ø High efficiency: 125lm/w
- Ø CRI: Ra>80
- Ø Both dimmable & Non-dimmable
- Ø Energy-saving& Super bright , saving 75% energy compared with traditional panel lights

Technical Characteristics:

Color Temperature	3000K, 4000K, 5000K	LED Type	SMD 2835
CRI	>82	Frame color	Silver/ White
Lumen	6250lm ± 5%lm	Beam Angle	120 Degree
Input Power	50 W	Dimension	603 x 1213 mm
Lumen Efficacy	125 LM/W		
Input Voltage	100-277Vac 50/60Hz		
Power Supply	External Constant Current Power Supply		
PFC	>0.9		
Dimmable	Dimmable & non-dimmable		

Application:

- Hotels / Meeting Rooms
- Factories / Offices / Car parks /Schools
- Hospitals / Supermarkets / Railway Stations& Airports

Technical Specifications

Listings:

DLC Listing

UL Number : E485941

Waterproof Rating - IP65

Others



UL Number : E485941

Operating conditions:

Operating Temperature	-20°C TO 45°C
Operating Humidity	20%- 90% RH
Storage Temperature	-30°C TO 80°C
Application	Indoor light
Storage Humidity	10%- 95%RH

Warranty time: 5 years

To prevent injury or damage to property, this product must be installed in accordance to National Electrical Code (NFPA70) in the US or Canadian Electrical Code (CSA 22.1) in Canada.

Risk of fire or electric shock. The electrical rating of these products are 100-277 Vac, the installer must determine whether they have 100-277 V at the luminaire before installation.

Risk of fire or electric shock. Installation requires knowledge of luminaires electrical systems. If not qualified, do not attempt installation. Contact a qualified electrician.

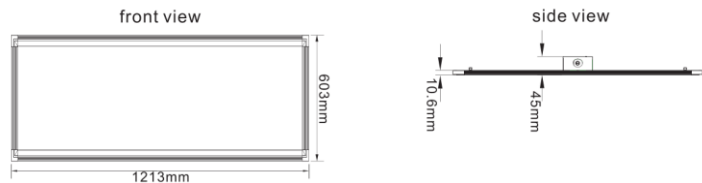
To prevent wiring damage or abrasion, do not expose wiring to edges of sheet metal or other sharp objects.

Disconnect power before installing the product or servicing it.

Wait until fixture has cooled down before installing or servicing the fixture.

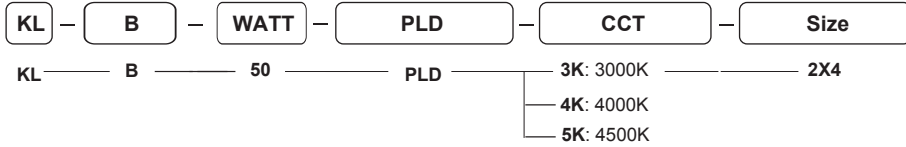
Min. 90°C Supply Conductors

Warranty Period assumes that the Products are operated for less than 8 hours per day.



KLB50PLDXX24-P

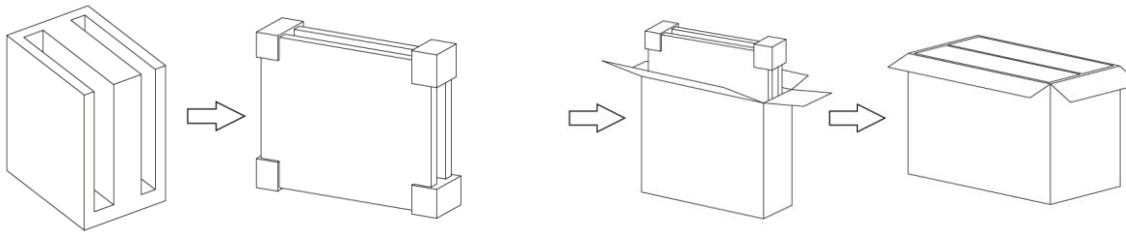
Order Information



Package

Lamps Net Weight: 8.9 Kg/PC

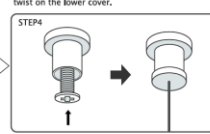
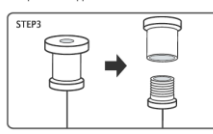
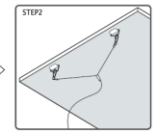
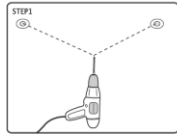
Size	Carton Size	G.W/Carton	Quantity/Carton
2x4'	1280x240x680mm	33.5 Kg	4



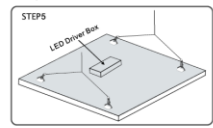
Installation Instructions

1. Suspended

According to the width of the panel light, drill 2 mounting holes on the mounting position



Connect LED panel light by the hook of suspension wire



2. Surface Mount

